



→ Heather Anderson, PE
Project Manager

City of Pacific Grove SR 68 / Congress, Sunset, Cedar Intersection Multi-Modal Safety Improvements

Public Outreach Meeting #1

January 9, 2024

W e l c o m e

Agenda

→ Brief Presentation

- Original Highway 68 Corridor Study
- Current Project: Purpose and Need, Scope & Next Steps

→ Open House

- What are the challenges you see today?
- What solutions would make this corridor serve you better?



Original Highway 68 Corridor Study

→ Existing Challenges
Design Concepts
Limitations

Pacific Grove Highway 68 Study

September / October 2016



Existing Challenges

- Congestion
- Complex Intersections
- School crossings
- Sidewalk/bicycle facility gaps



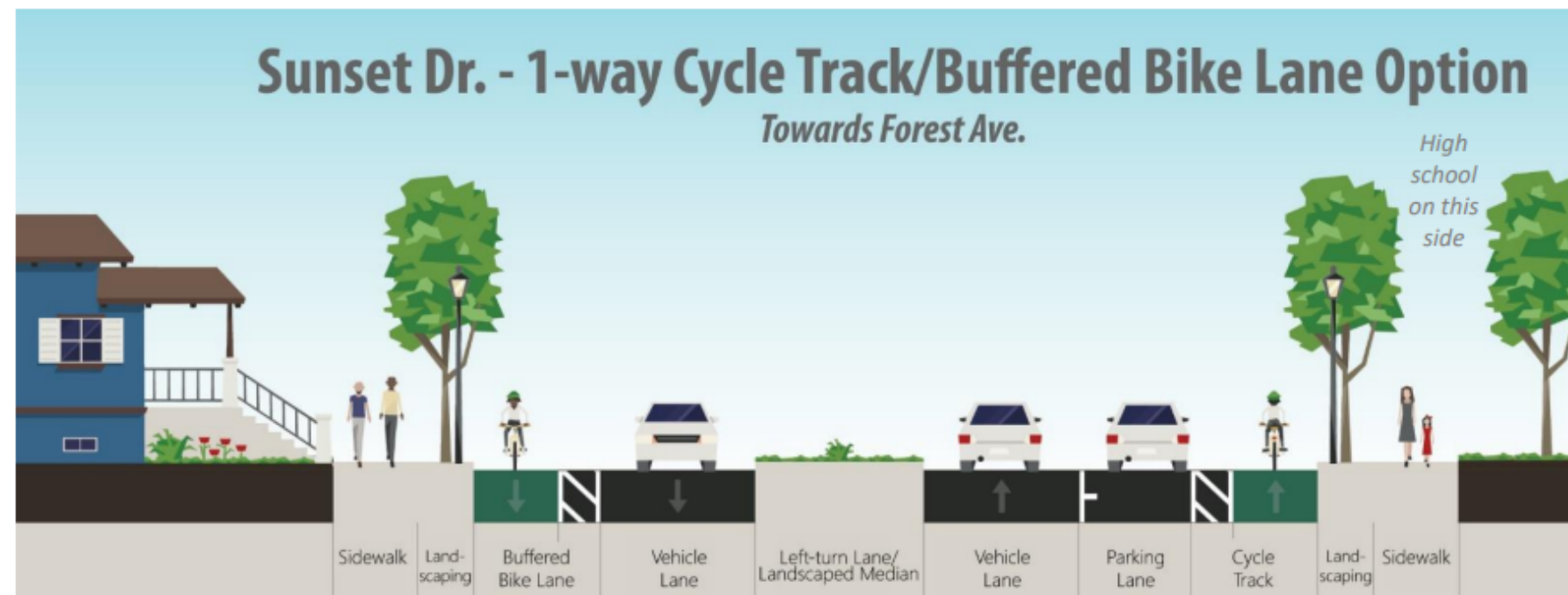
Existing Challenges

- Congestion
- Complex Intersections
- School crossings
- Sidewalk/bicycle facility gaps

Figure 1 | Project area and context map

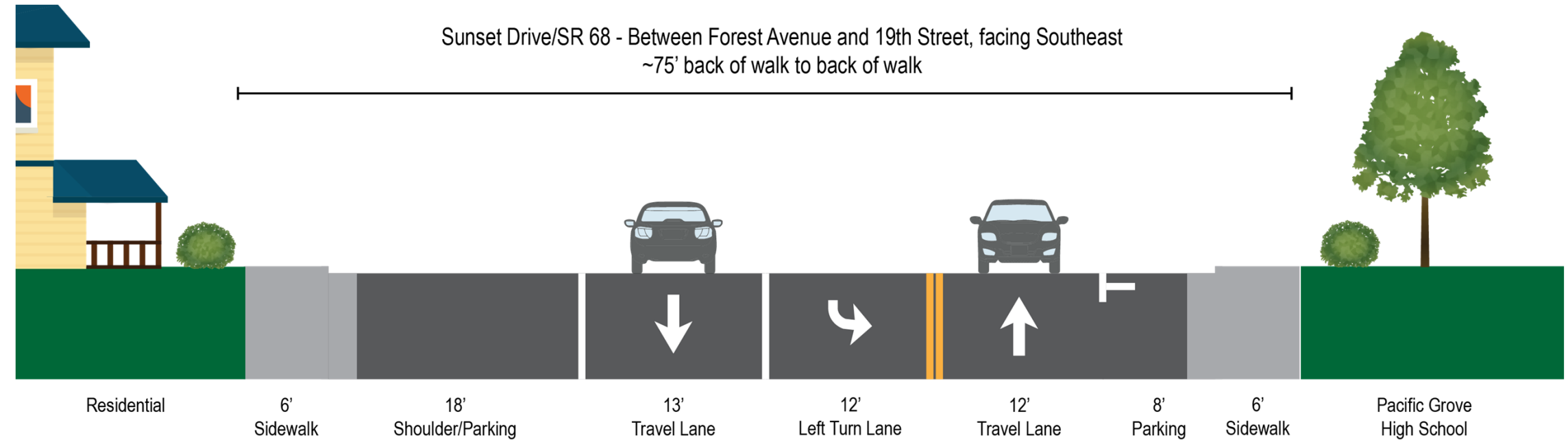


Previous Study Design Concepts

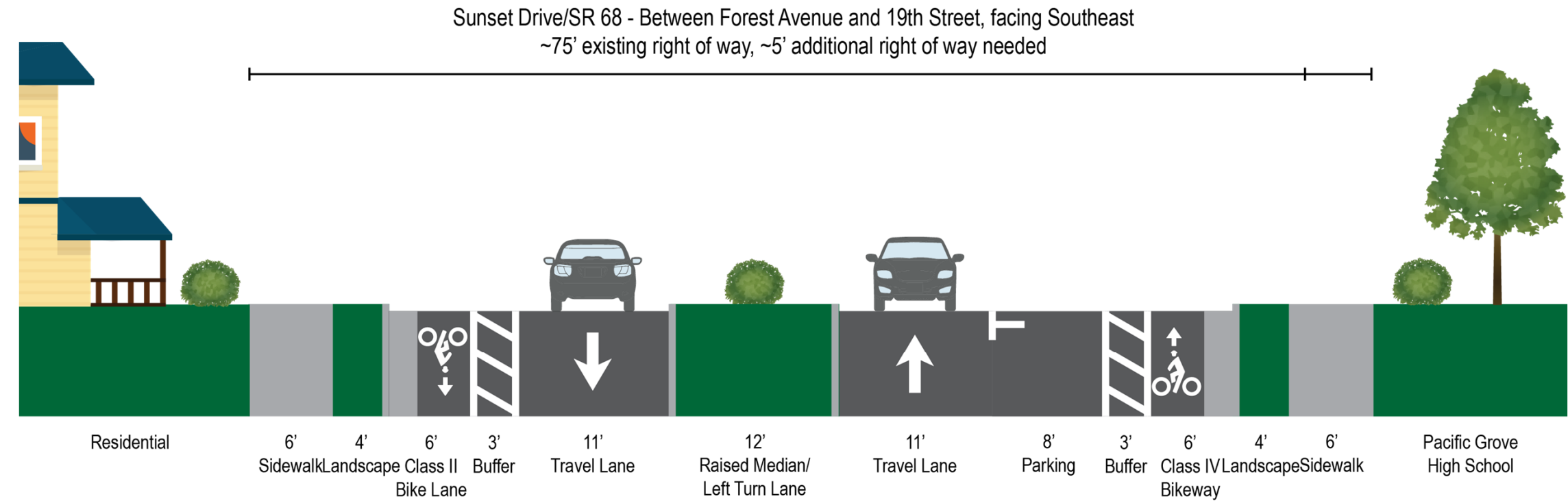


Right of Way Limitations

Existing
Conditions



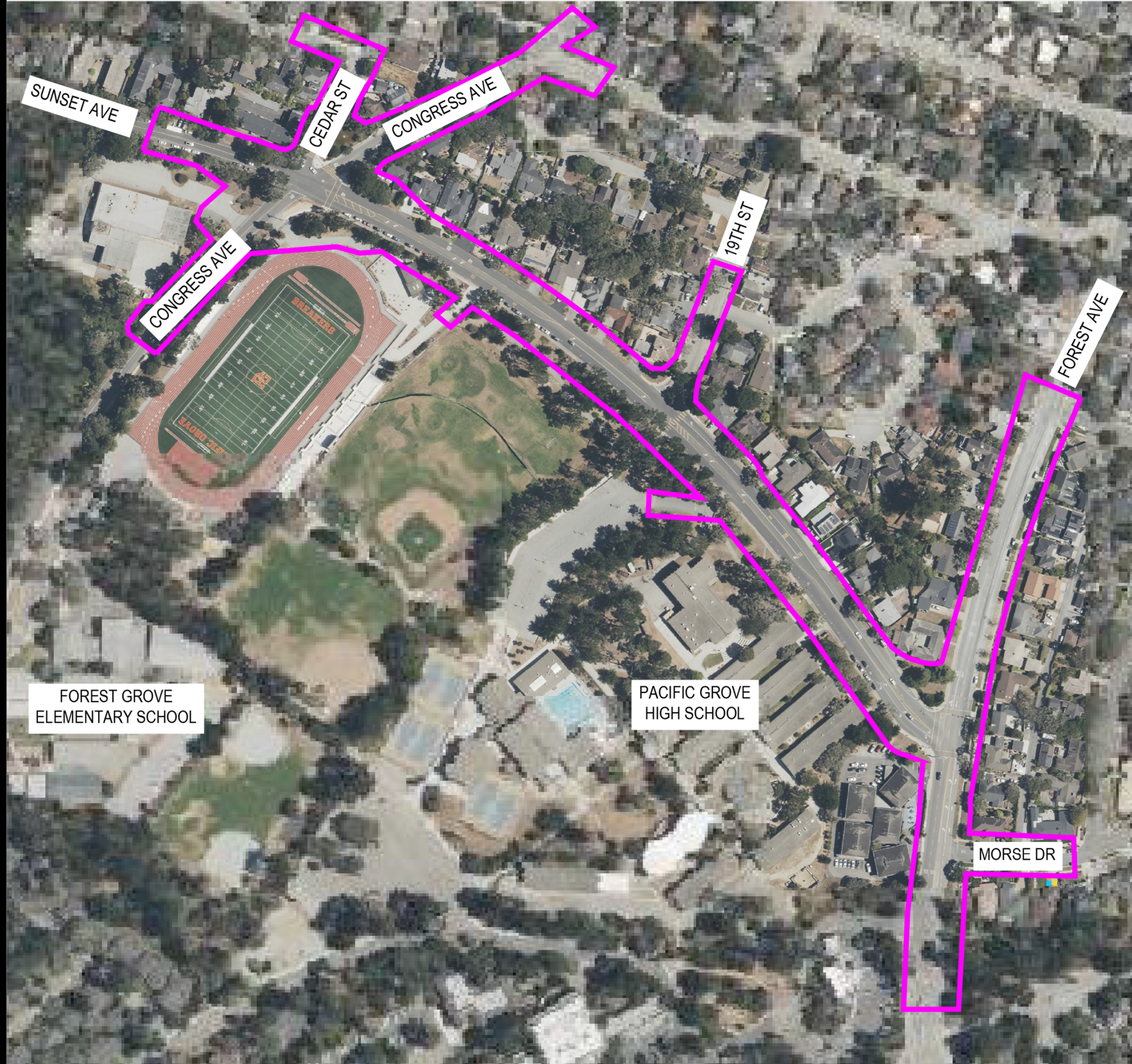
Previous Study
Concept –
Requires additional
right of way





Current Project

- Purpose and Need
- Scope
- Next Steps



Purpose and Need

Purpose

The primary purpose of the proposed project is to improve safety for all travel modes along Sunset Drive/SR 68 within the project limits, especially for improving safe route to the two adjacent schools through resolution of pedestrian and bicyclist conflicts by improvements to sidewalks, bike facilities and access/egress to schools during pick-up and drop-off periods. The secondary purpose of this project is to improve operations and enhance mobility for all travel modes at the study intersections during peak and offpeak hours.

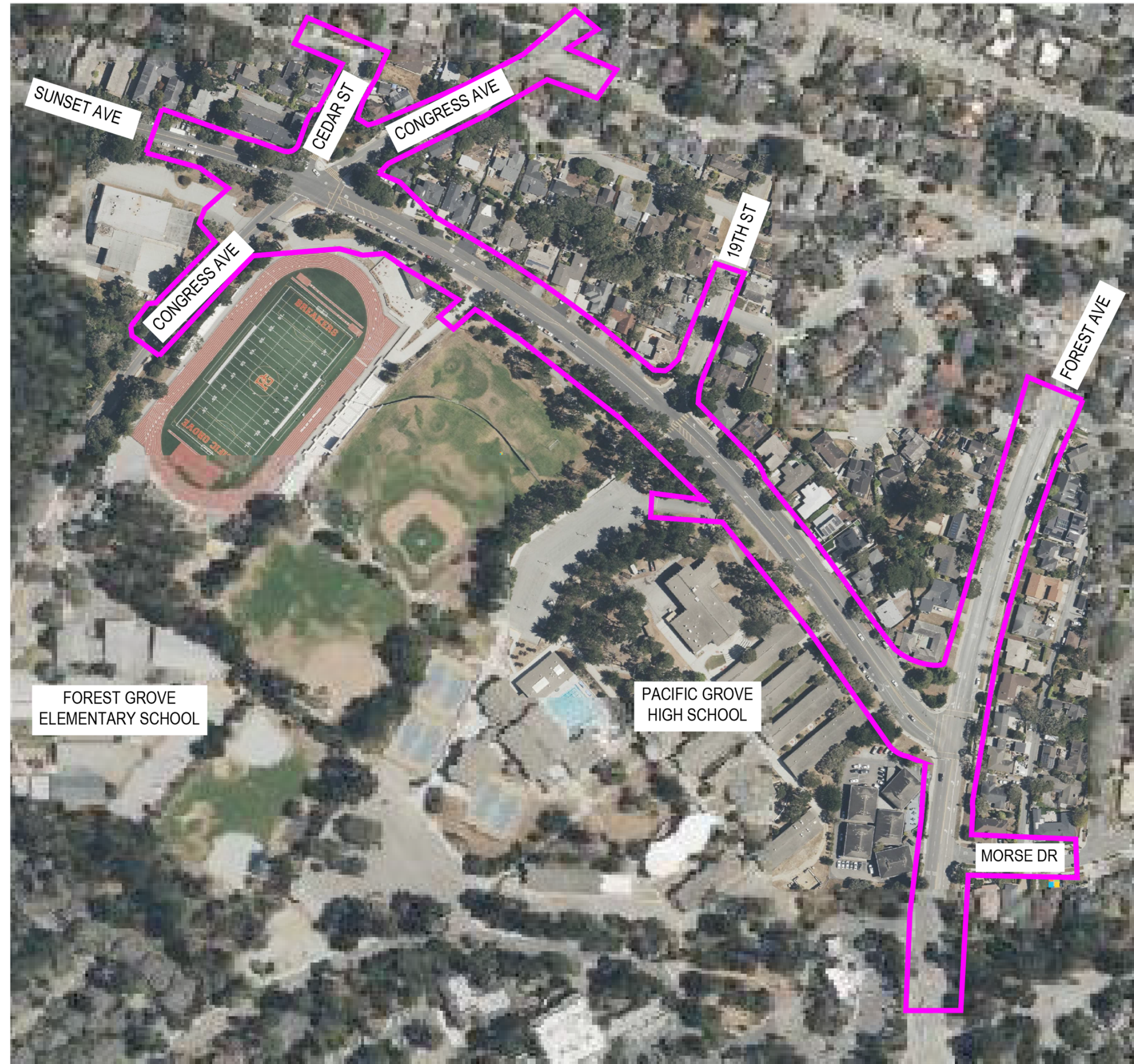
Need

The corridor serves a wide variety of roadway users and functions in the community. Visitors and tourists travel on SR 68 by car or on bicycles to access the ocean, 17 Mile Drive, or other destinations. People walking and bicycling are forced to mix with cars, traveling on the edge of the roadway, because sidewalks through the area are incomplete, and no dedicated bicycle facility is provided.

For local residents, SR 68 provides regional connections but is also a residential street and experiences congestion during student drop-off and pick-up at the high school and elementary school to the south. Frequent U-turns and students darting across the street midblock add to the chaotic street environment, demonstrating demand for improved school access controls and a high-quality crossing at 19th Street.

Scope of Improvements

- Two blocks of Sunset: Forest Drive to Cedar/Congress
 - Intersection improvements at Sunset/Forest and at Sunset/Cedar/Congress 5-Way Intersection
 - Improve crossing at 19th Street
 - Bicycle and pedestrian connections along Sunset Drive



Next Steps

Decision on Preliminary Layout Spring 2024

CONCEPTUAL SCHEDULE



	Aug-23	Sep-23	Oct-23	Nov-23	Dec-23	Jan-24	Feb-24	Mar-24	Apr-24	May-24	Jun-24
Project Management & Coordination											
CT Upper Management Meetings	M			M							
PDT Meetings								M	M	M	M
Quality Assurance/Quality Control											
Public Outreach											
Public Engagement Memo			D								
Community Outreach Meetings					M	M	M		M	M	M
Exhibits and Visual Simulation/Renderings					D	D	D	D	D	D	D
Preliminary Engineering											
Topographic and Boundary Surveys					D						
Traffic Analysis/ICE	D	D	D	D	D	D	D	D	D	D	D
Preliminary Engineering (30% Design)						D	D	D	D	D	D
Nonstandard Design Features						D	D	D	D	D	D
Preliminary Right of Way Exhibits								D	D	D	D
DEER Justification Memo								D	D	D	D
PEAR								D	D	D	D

Tonight

- Share your ideas and challenges**
- Ask questions**



*** Thank You**

→ ghd.com